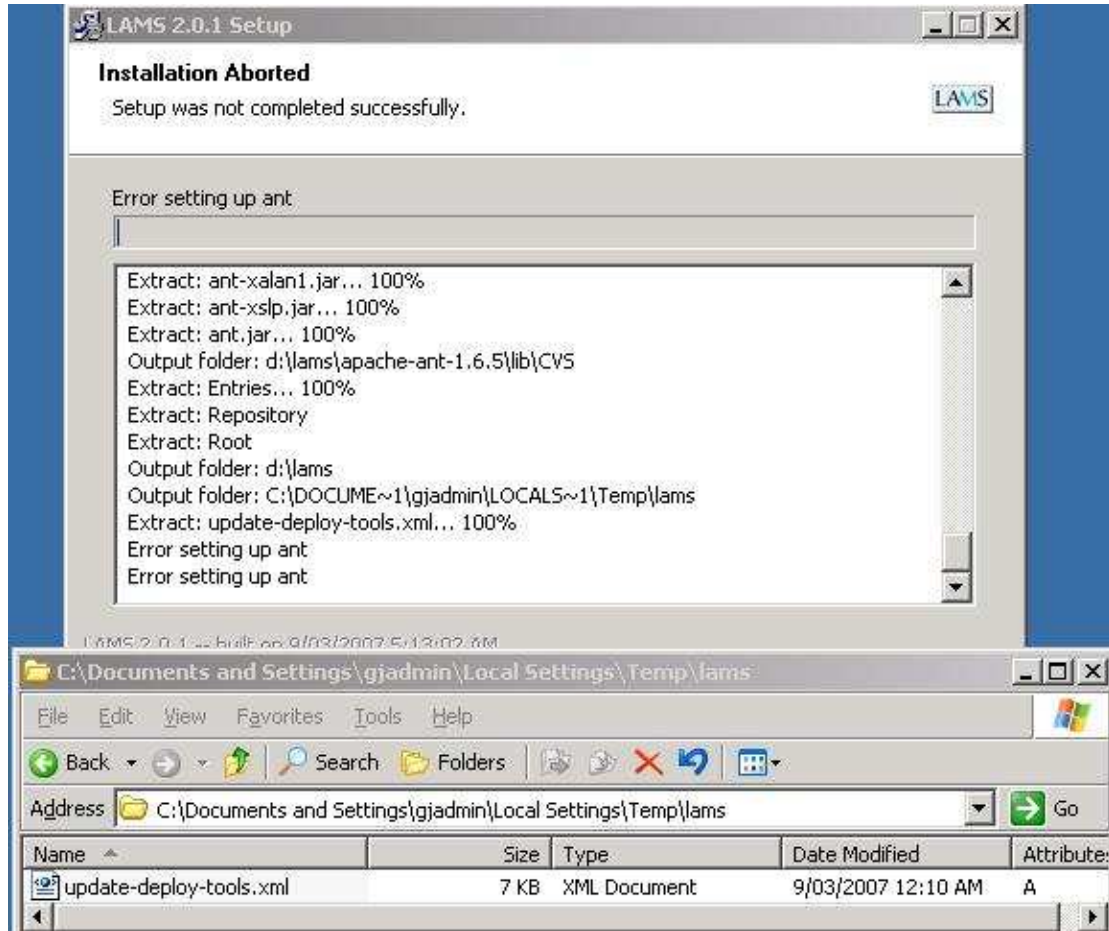


Removed temp folder from c:\docs and settings\ etc as per screenshot below and reran install – still has error.
Lams is installed on D:
Java is in c:\prog files\java\... which is correctly detected by the setup



Screenshots of log after reporting Error setting up Ant

```
Installing LAMS 2.0.1 core :  
Backing up lams at: d:\lams-200703140907.bak. This may take a few minutes  
Copy to d:\lams-200703140907.bak  
Dumping database to: d:\lams-200703140907.bak  
Output folder: d:\lams-200703140907.bak  
"D:\MySQL\MySQL Server 5.0\bin\mysqldump" -r "d:\lams-200703140907.bak\dump....  
Removing d:\lams\jboss-4.0.2\server\default\tmp  
Removing d:\lams\jboss-4.0.2\server\default\work\jboss.web\localhost  
Output folder: d:\lams  
Output folder: d:\lams\apache-ant-1.6.5  
Extract: INSTALL... 100%  
Extract: KEYS... 100%  
Extract: LICENSE... 100%
```

Extract: KEYS... 100%
Extract: LICENSE... 100%
Extract: LICENSE.dom... 100%
Extract: LICENSE.sax... 100%
Extract: LICENSE.xerces... 100%
Extract: NOTICE... 100%
Extract: README... 100%
Extract: TODO... 100%
Extract: WHATSNEW... 100%
Extract: welcome.html... 100%
Output folder: d:\lams\apache-ant-1.6.5\CVS
Extract: Entries... 100%

Extract: Repository
Extract: Entries... 100%
Extract: Repository
Extract: Root
Output folder: d:\lams\apache-ant-1.6.5\bin
Extract: ant... 100%
Extract: ant.bat... 100%
Extract: ant.cmd... 100%
Extract: antRun... 100%
Extract: antRun.bat... 100%
Extract: antRun.pl... 100%
Extract: antenv.cmd... 100%
Extract: complete-ant-cmd.pl... 100%
Extract: complete-ant-cmd.pl... 100%
Extract: complete-ant-cmd.pl... 100%
Extract: envset.cmd... 100%
Extract: lcp.bat... 100%
Extract: runant.pl... 100%
Extract: runant.py... 100%
Extract: runrc.cmd... 100%
Output folder: d:\lams\apache-ant-1.6.5\bin\CVS
Extract: Entries... 100%
Extract: Repository
Extract: Root
Output folder: d:\lams\apache-ant-1.6.5\lib
Extract: ant-antr.jar... 100%

Extract: ant-antr.jar... 100%
Extract: ant-apache-bcel.jar... 100%
Extract: ant-apache-bsf.jar... 100%
Extract: ant-apache-log4j.jar... 100%
Extract: ant-apache-oro.jar... 100%
Extract: ant-apache-regexp.jar... 100%
Extract: ant-apache-resolver.jar... 100%
Extract: ant-commons-logging.jar... 100%
Extract: ant-commons-net.jar... 100%
Extract: ant-icompat.jar... 100%
Extract: ant-jai.jar... 100%
Extract: ant-javamail.jar... 100%
Extract: ant-jdepend.jar... 100%

Extract: ant-javamail.jar... 100%
Extract: ant-jdepend.jar... 100%
Extract: ant-jmf.jar... 100%
Extract: ant-jsch.jar... 100%
Extract: ant-junit.jar... 100%
Extract: ant-launcher.jar... 100%
Extract: ant-netrexx.jar... 100%
Extract: ant-nodeps.jar... 100%
Extract: ant-starteam.jar... 100%
Extract: ant-stylebook.jar... 100%
Extract: ant-swing.jar... 100%
Extract: ant-trax.jar... 100%

Extract: ant-util.jar... 100%

```
Extract: ant-trax.jar... 100%
Extract: ant-vaj.jar... 100%
Extract: ant-weblogic.jar... 100%
Extract: ant-xalan1.jar... 100%
Extract: ant-xslp.jar... 100%
Extract: ant.jar... 100%
Output folder: d:\lams\apache-ant-1.6.5\lib\CVS
Extract: Entries... 100%
Extract: Repository
Extract: Root
Output folder: d:\lams
Output folder: C:\DOCUME~1\gjadmin\LOCALS~1\Temp\lams
Extract: update-deploy-tools.xml... 100%
Output folder: d:\lams
Output folder: C:\DOCUME~1\gjadmin\LOCALS~1\Temp\lams
Extract: update-deploy-tools.xml... 100%
Error setting up ant
Error setting up ant
```